



ALIGHT

COB LED & LED LIGHTING

Hot Sale LED Track Lights

HIGH-END TRACK LIGHT



Track Light

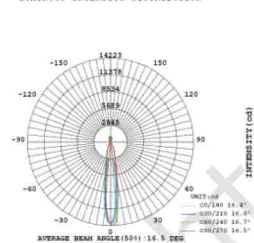
AL-TL0220



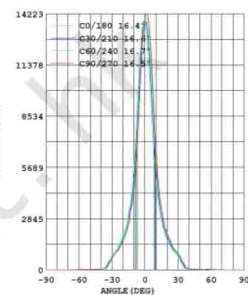
- The die-casting aluminum lamp body, with every parts well-designed and looking fashionable. All parts have been strictly according to EU regulation.
- No RF interference, no buzzing noise, no UV radiation.

PRODUCT PARAMETERS

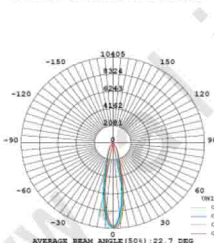
LUMINOUS INTENSITY DISTRIBUTION



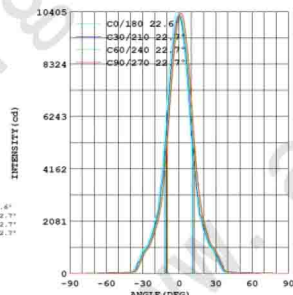
LUMINOUS INTENSITY DISTRIBUTION



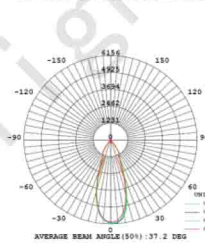
LUMINOUS INTENSITY DISTRIBUTION



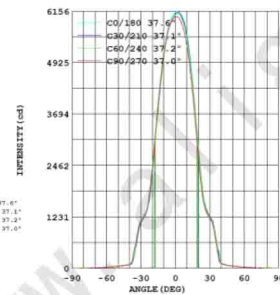
LUMINOUS INTENSITY DISTRIBUTION



LUMINOUS INTENSITY DISTRIBUTION



LUMINOUS INTENSITY DISTRIBUTION



Model	Power	Size (mm)	LED	CRI (Ra)	CCT	Luminous Flux	Beam Angle	Dimensions
AL-TL0220	20W	Φ86.5*110	Cree CXA1816	≥80	2700K-5000K	1900lm	18° 24° 38°	



LED

CREE

Ra > 85

Brightness > 100 lm/w

Lifespan > 50,000 hours



Reflector Cup

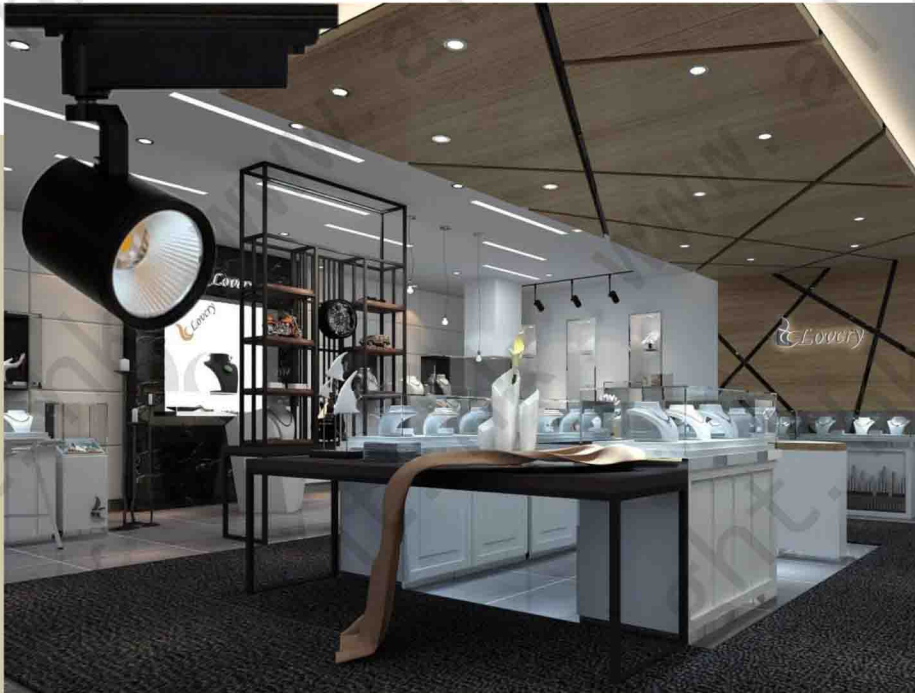
Reflectivity (VLT) > 92%

15° / 24° / 36° Available



TRIAC DIMMING with CABLE

With Dimmable Driver



Track Light

AL-TL0220

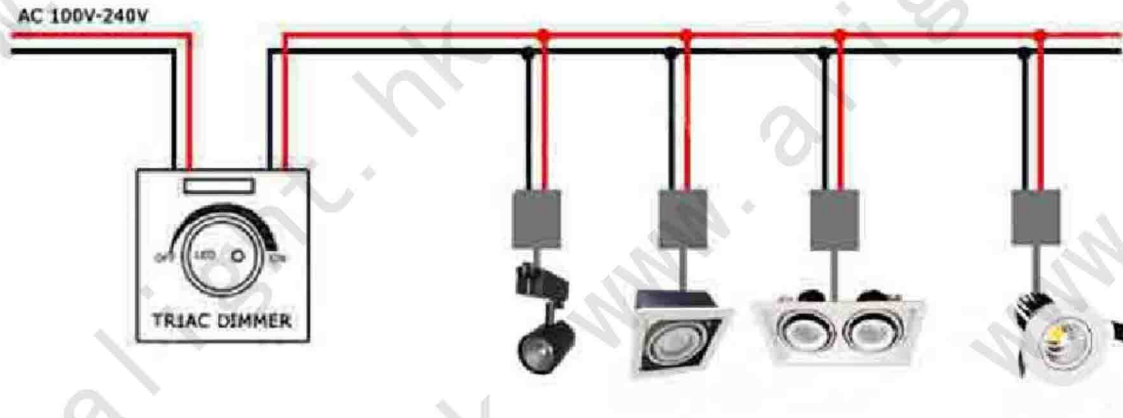


IP20



TRIAC Diagram:

TRIAC Dimming



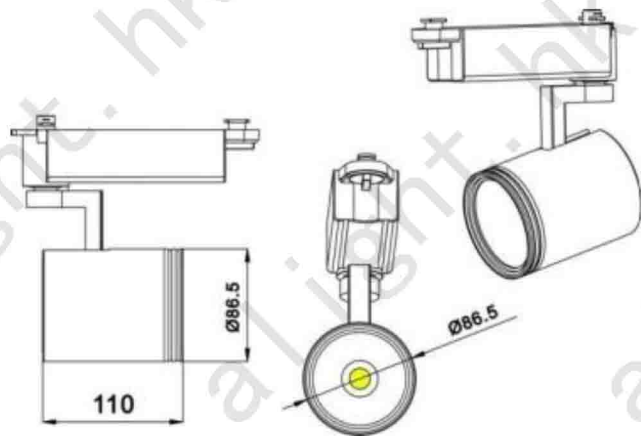
LED Dimmer:



Technical Description

- The triac dimming circuit, a diode alternating current switch (diac) and an LRC circuit generate a pulse that turns on the triac for some portion of the ac cycle. (The diac can conduct current in either direction, but not until breakdown voltage has been exceeded.) A potentiometer adjusts the point at which the diac to send the triac a trigger signal.
- Triacs make up the heart of AC light dimming controls. Triacs used in dimmers have normally been characterized and specified for incandescent lamp loads, which have high current ratings for both steady-state conditions and initial high in-rush currents, as well as very high end-of-life surge current when a filament ruptures.

PRODUCT PARAMETERS



- Model : AL-TL0220
- Total power : 20W
- Size : Ø86.5x110mm
- Color : White & Black
- Weight : 0.9kg
- Total lighting output : 1900
- Color temperature : 3000-6000K
- CRI : 80Ra
- Luminous efficacy (real value): 90lm/W
- Voltage : AC200-240V
- Life Time: 50.000hrs L80 B10 (Ta 40° C)
- PF : > 0.95
- Beam angle [°]: 18 / 24 / 38
- Base Type : 2 pin, 3 pin and 4 pin available

If you are interested in our products, pls feel free to contact us. We look forward to cooperating with you !



< Alight Optoelectronic Industry Commerce Co.,LTD >

TEL : +86 760 22107179

FAX : +86 760 22102131

Website: www.alight.hk/www.alightinc.hk

ADD : 2/F,110# XiaoLan Ave.Central,XiaoLan Town,ZhongShan City,GuangDong,
China 528415



Thank You

Take Alight,Take a Bright Life.