



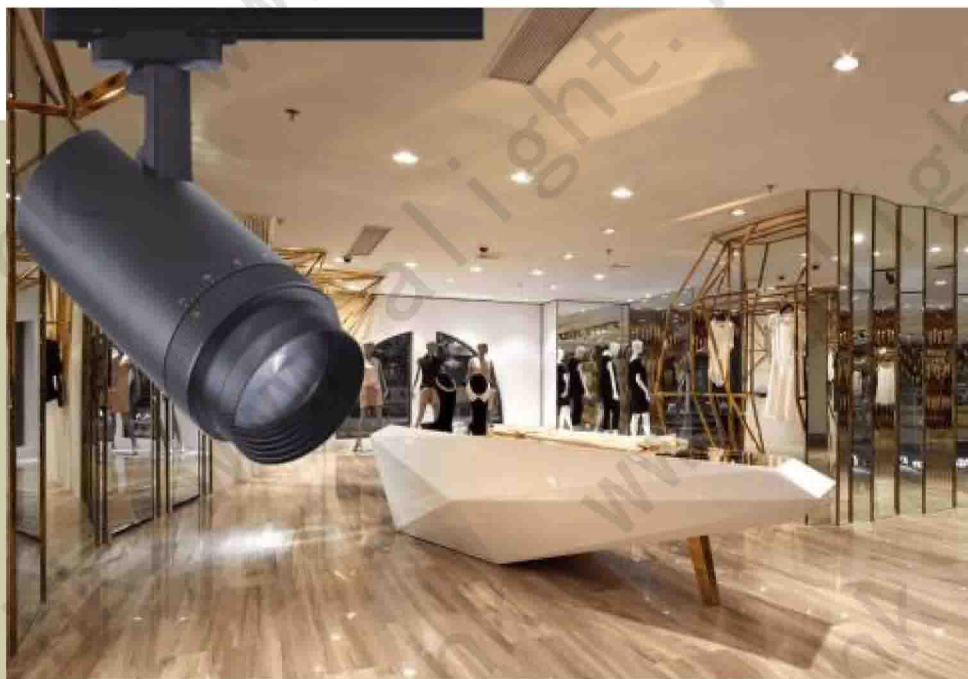
# ALIGHT

---

COB LED & LED LIGHTING

**Hot Sale LED Track Lights**

# ***HIGH-END TRACK LIGHT***



**Track light**

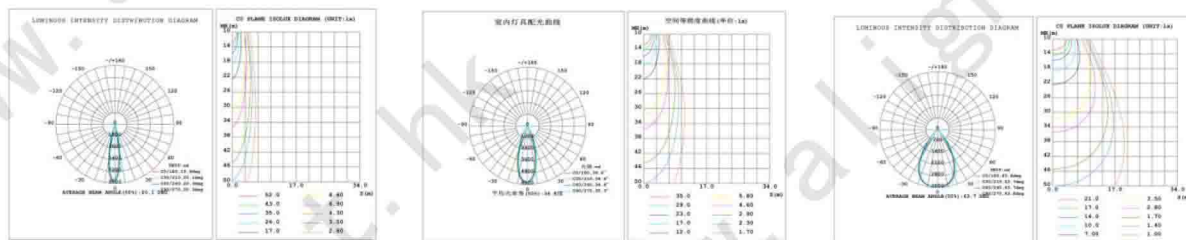
AL-TL0330A

AL-TL0340A



- Focusing design, to achieve a beam angle from 20° to 60° adjustable combination
- The die-casting aluminum lamp body, with every parts well-designed and looking fashionable. All parts have been strictly according to EU regulation.
- No RF interference, no buzzing noise, no UV radiation.

# PRODUCT PARAMETERS



Adjustable Beam Angle



Model	Power	Size (mm)	LED	CRI (Ra)	CCT	Luminous Flux	Beam Angle	Dimensions
AL-TL0330A	30W	Φ 101*205	CITIZEN COB	≥80	3000K-6000K	2400lm	20° 40° 60°	
AL-TL0340A	40W	Φ 101*205	CITIZEN COB	≥80	3000K-6000K	3200lm	20° 40° 60°	

# ***DALI DIMMING***

## **DALI Controlled Solutions**



**Track light**



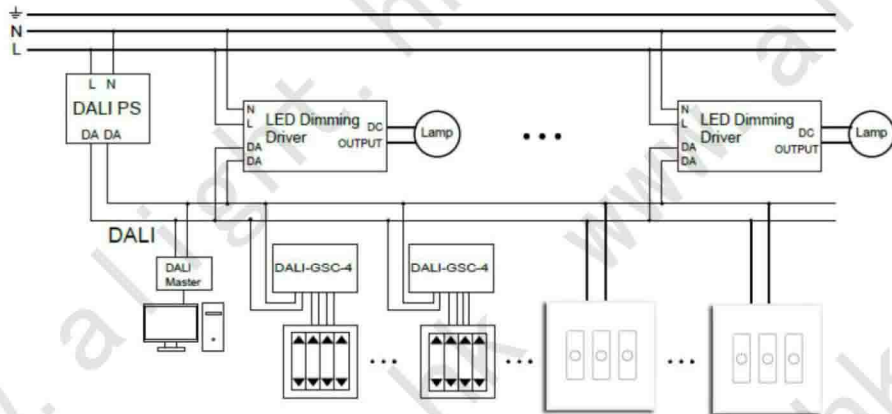
IP20





## Technical Description

### DALI Diagram:



### What is DALI?

- **DALI** stands for Digital Addressable Lighting Interface. In other words, it is a worldwide standardized digital lighting interface.
- **DALI** is a two-way communication system that brings digital technology to lighting. Every aspect of lighting can be incorporated into a DALI control solution.
- **DALI** can control a single light fitting or a defined group of light fittings within a network.
- **DALI** allows for light fittings and user interfaces to use the same data network effectively reducing cabling by half.

### DALI Dimming Track Light:

Adjustable spotlight with adapter for installation on mains voltage track for high-performance LED with monochromatic Neutral White (4,000K) emission.

### DALI driver built-into product.

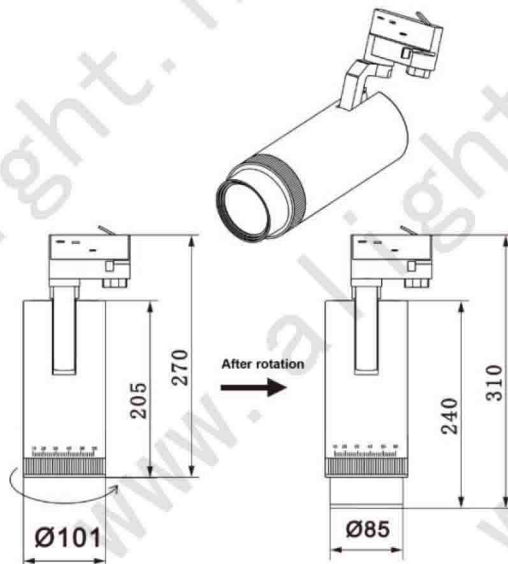
The fitting is made of die-cast aluminum and thermoplastic material.

# PRODUCT PARAMETERS

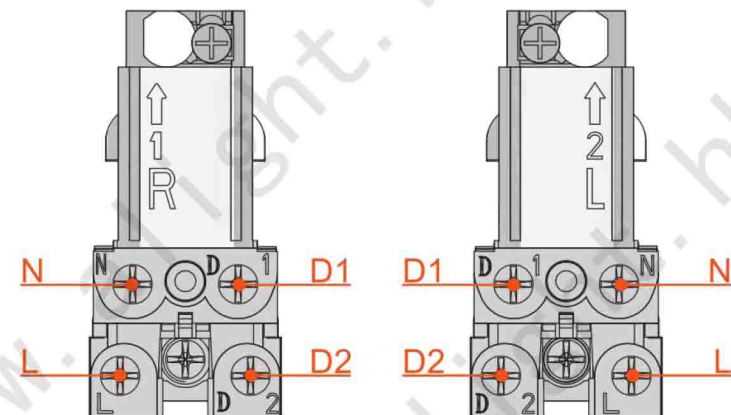
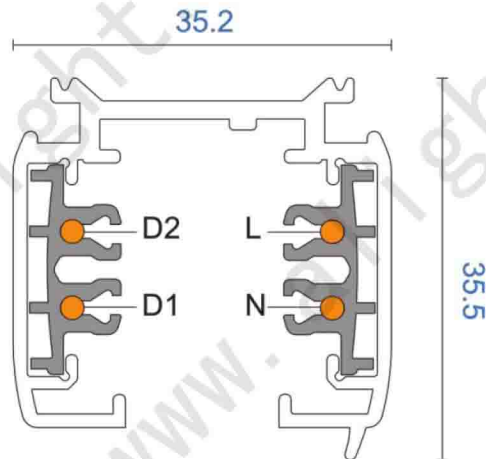


*Wiring info : DALI components contained within the fitting.*

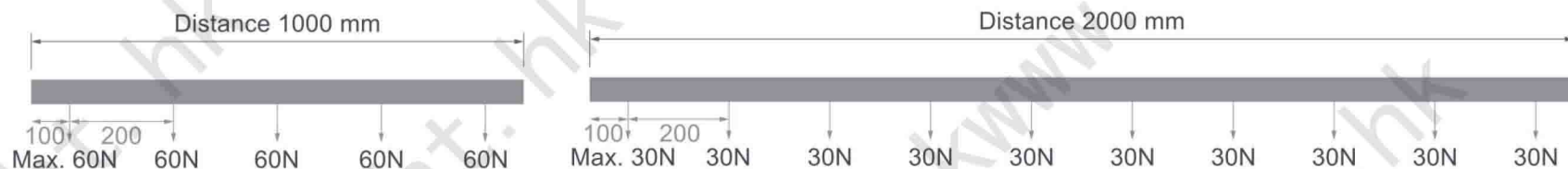
- Model : AL-TL0330A
- Total power : 30W
- Size :  $\Phi$  101\*205
- Color : Black
- Weight : 1.54kg
- Total lighting output : 2400lm
- Color temperature : 3000-6000K
- CRI : 80Ra
- Luminous efficacy (real value): 90lm/W
- Voltage : AC200-240V
- Life Time: 50.000hrs L80 B10 (Ta 40°C)
- PF : > 0.9
- Beam angle [°]: 20/ 40/ 60
- Base Type : 4 wire



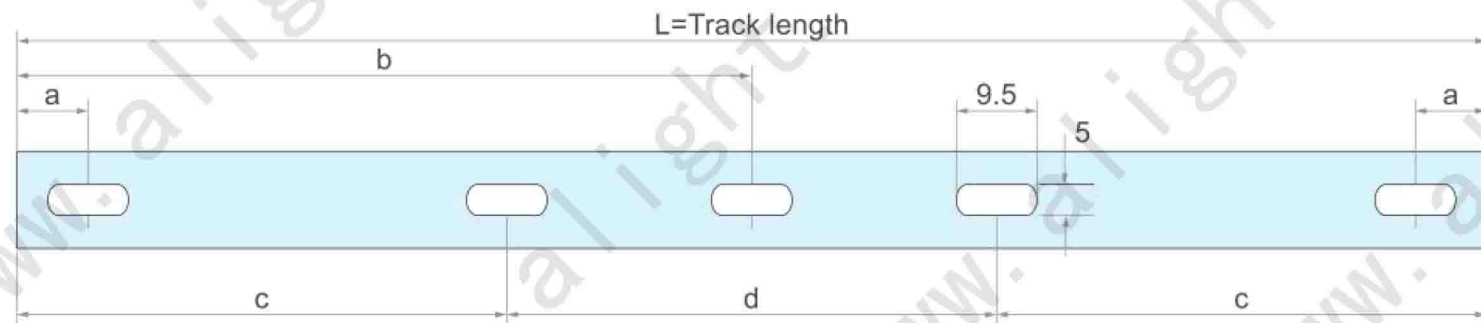
# SINGLE CIRCUIT *DALI* TRACK SYSTEM



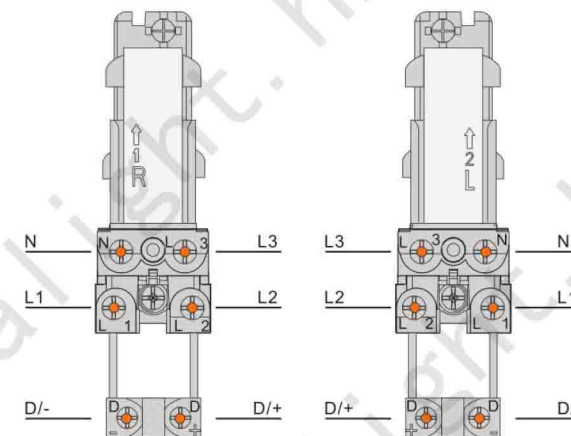
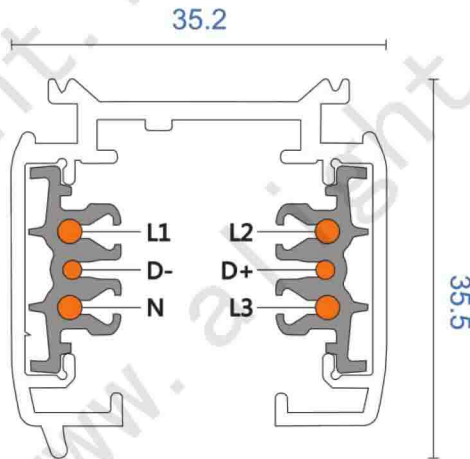
## Track Length:



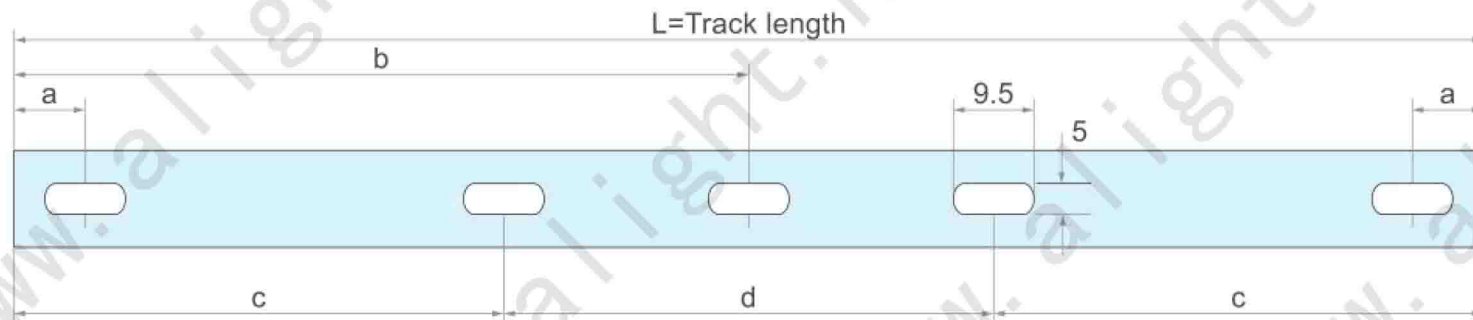
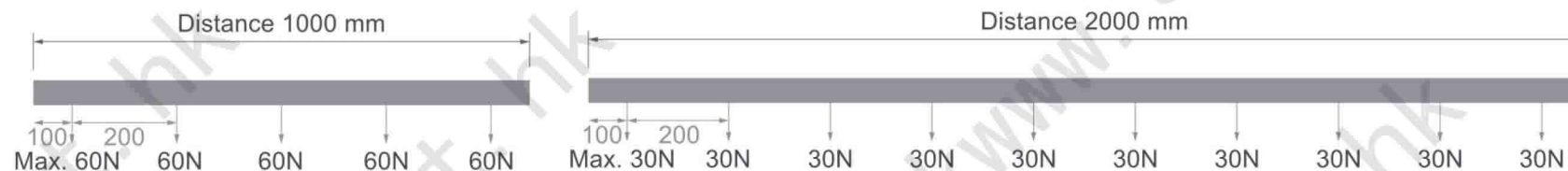
L / mm	a / mm	b / mm	c / mm	d / mm
1000	125			
2000	125	998		
3000	125		914	1167
4000	125		1247	1501



# 3 CIRCUIT DALI TRACK SYSTEM



## Track Length:

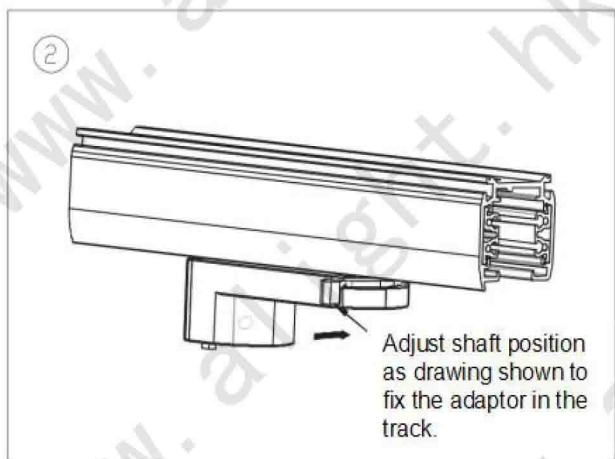
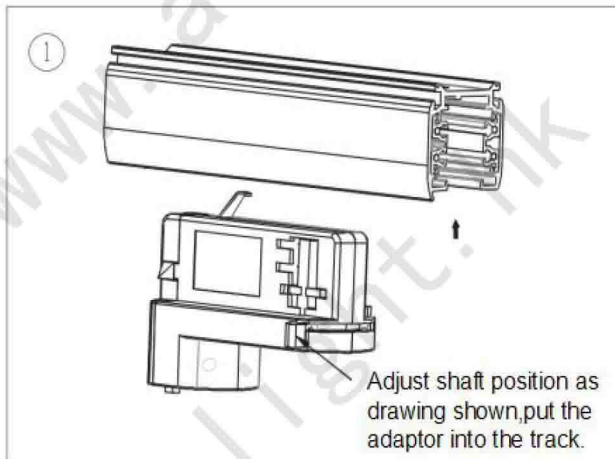


L / mm	a / mm	b / mm	c / mm	d / mm
1000	125			
2000	125	998		
3000	125		914	1167
4000	125		1247	1501

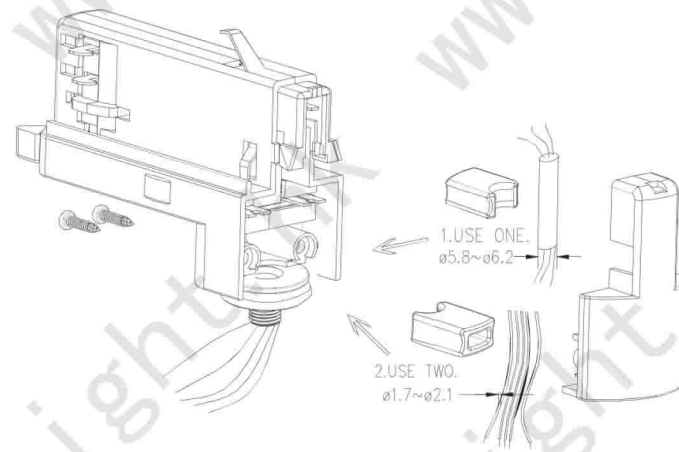
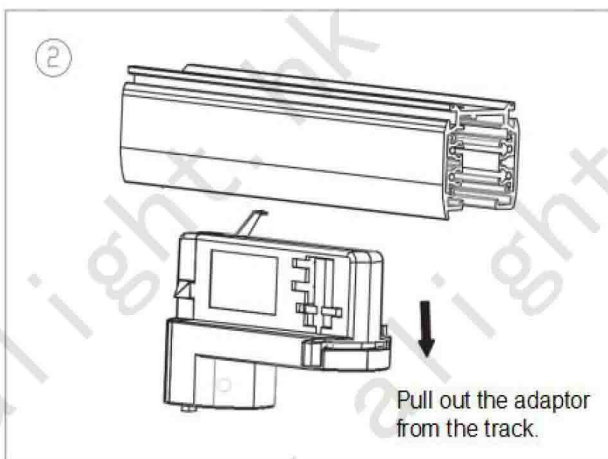
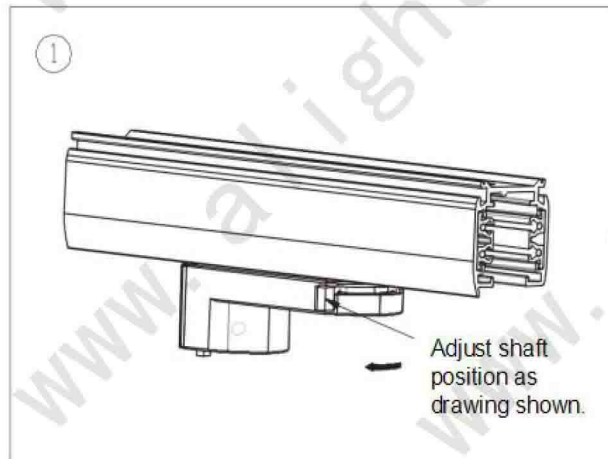


# MOUNTING INSTRUCTION

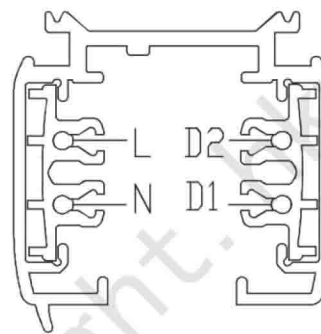
## Adaptor Installation Instruction



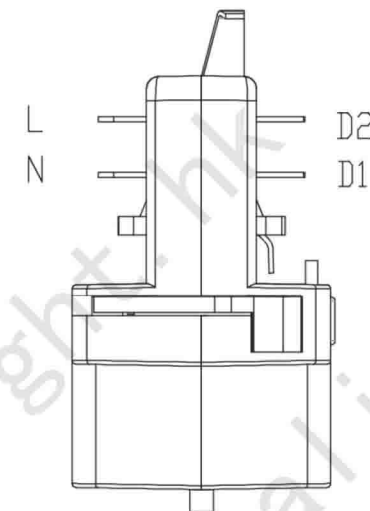
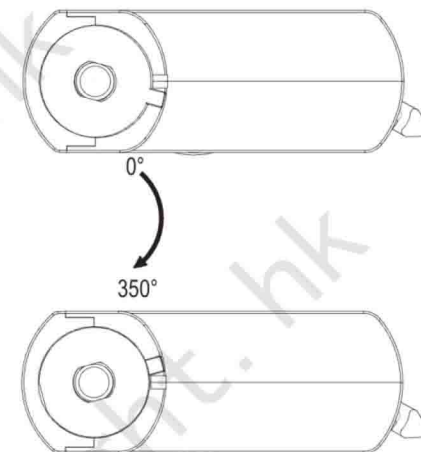
## Adaptor Disassembly Instruction



1. Earth wire, Live wire and Null wire: 0.75<sup>2</sup>, 18A WG (Press the wire into wire slot by tool)
2. D1, D2 Wire: 16-26A WG, 7-8mm of the wire end is bare and tinned or Shark Teeth.
3. Maximum torque of screw: 5Kgf.cm
4. Rotation range of connector between light and adaptor 0-350°
5. Electrical parameter: 12V-250V(AC,DC), 10A.

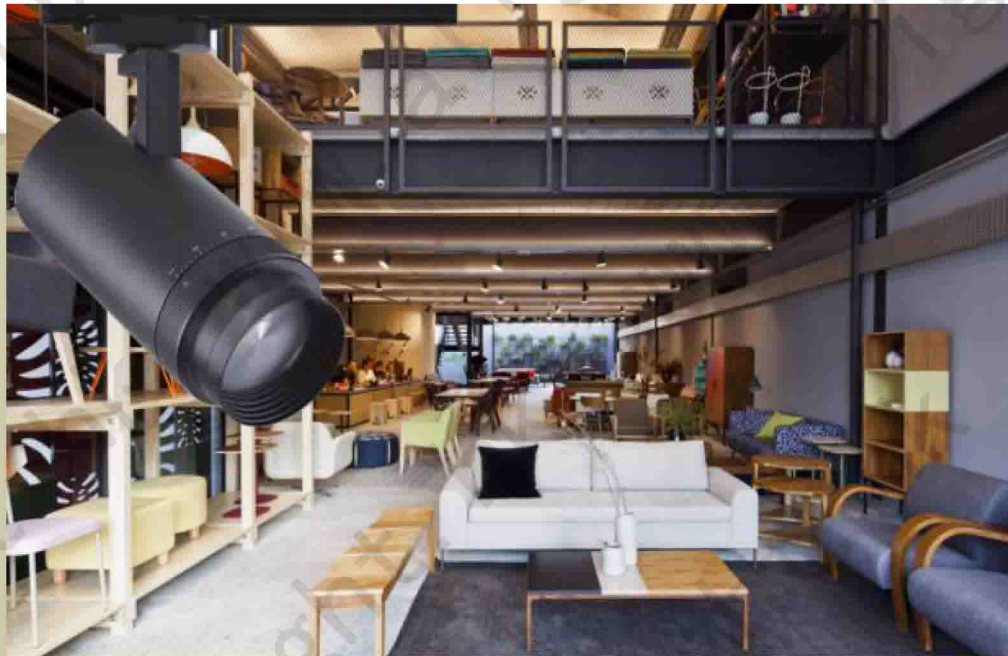


## Single Circuit DALI Track



# ***TRIAC SOFT DIM***

## **Warm Glow LED Dimming**



**Track light**

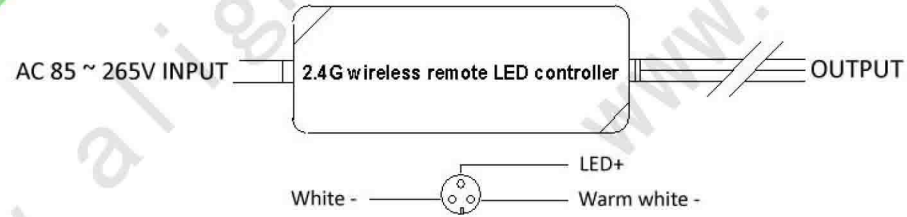
AL-TL0330A/40A

IP20 A++

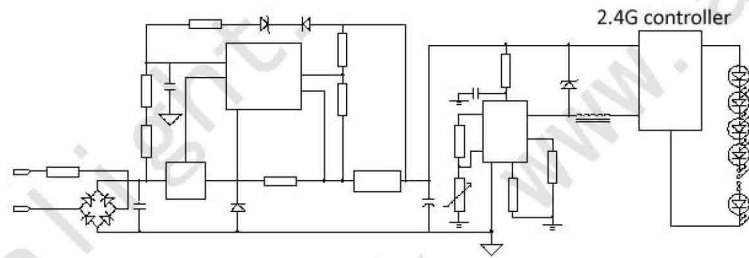


- 2.4G wireless remote controller systems
- Can use the triac dimmer to dim the Color temperature & Intensity, you only need to install our cct adjustable lamp, no need to change anything else.

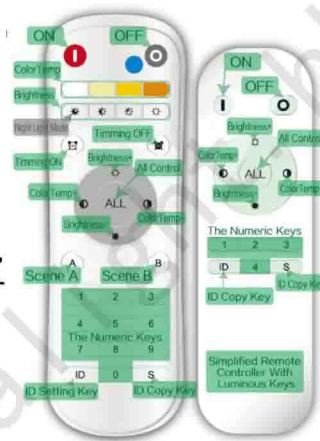
## TRIAC Diagram:



No strobe brightness adjusting: 1% ~ 100%  
 Color temperature adjusting :2800K ~6500K  
 Remote operating frequency : 2.4G



Triac with the 2.4G remote controller (wireless triac dimming):



## Technical Description

*LED Dimming offers both perfection & peace of mind.*

- **Soft Dim Technology** offers both conventional phase dimming and DALI controlled solutions.
- **Soft Dim** allows you to create the perfect balance between visual comfort and ambience.
- **Soft Dim Technology** not only reduces both the luminous intensity and colour temperature of the light source when dimmed , but also so following the curve of a halogen closely. The result is gradual and smooth transformation between 2800K and 6500K over the dimming range of 1% - 100%.

➤ **Remarks:** Dual color COB LEDs , they only can reach around 80lm/W for whole lamp. If you don't need color temperature adjustable, only need normal dimmable(e.g 2700K,3000K,4000K,5000K), we can reach 100lm/W.

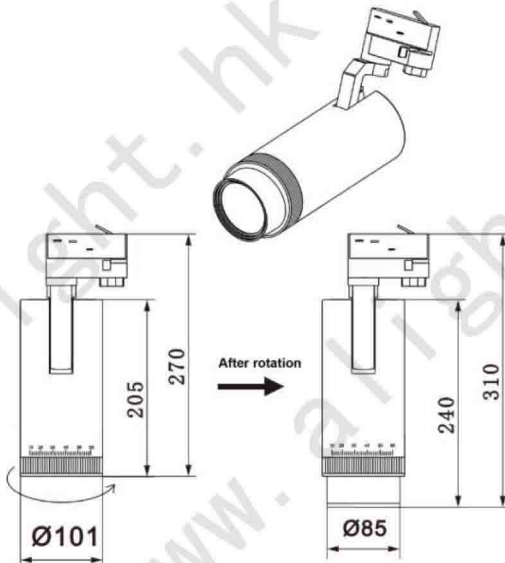


# PRODUCT PARAMETERS



## LED: Dual colour COB chip

- Model : AL-TL0330A
- Total power : 30W
- Size :  $\Phi 101 \times 205$
- Color : Black
- Weight : 1.54kg
- Total lighting output : 2400
- Color temperature : 3000-6000K
- CRI : 80Ra
- Luminous efficacy (real value): 90lm/W
- Voltage : AC200-240V
- Life Time: 50.000hrs L80 B10 (Ta 40°C)
- PF : > 0.9
- Beam angle [°]: 20 / 40/ 60
- Base Type : 2 pin, 3 pin and 4 pin available





# ***TRIAC DIMMING with CABLE***

**Built-in Dimmable Driver**



**Track light**

AL-TL0330A /40A

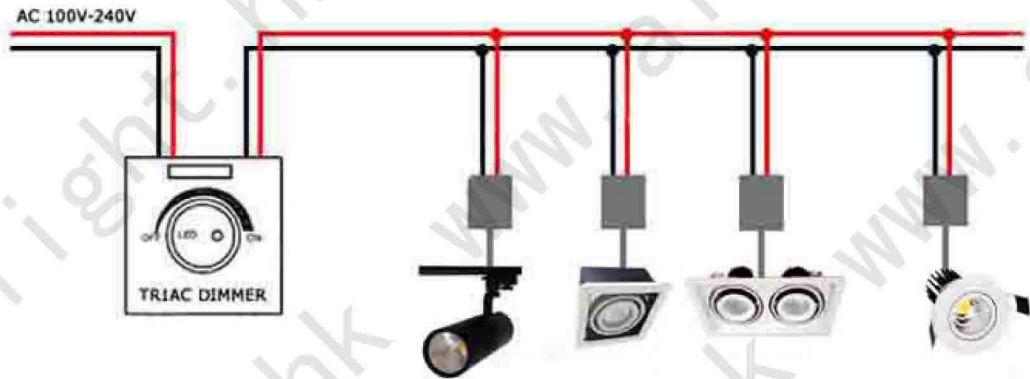
AL-TL0325/28

IP20 A++



## TRIAC Diagram:

### TRIAC Dimming



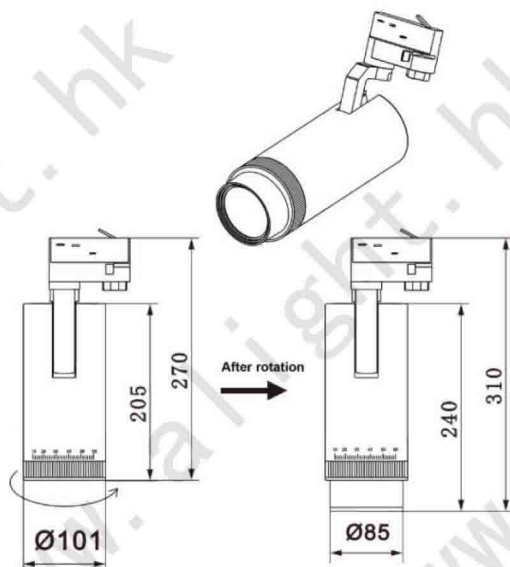
## LED Dimmer:



## Technical Description

- The triac dimming circuit, a diode alternating current switch (diac) and an LRC circuit generate a pulse that turns on the triac for some portion of the ac cycle. (The diac can conduct current in either direction, but not until breakdown voltage has been exceeded.) A potentiometer adjusts the point at which the diac to send the triac a trigger signal.
- Triacs make up the heart of AC light dimming controls. Triacs used in dimmers have normally been characterized and specified for incandescent lamp loads, which have high current ratings for both steady-state conditions and initial high in-rush currents, as well as very high end-of-life surge current when a filament ruptures.

# PRODUCT PARAMETERS



- Model : AL-TL0330A
- Total power : 30W
- Size :  $\Phi$  101\*205
- Color : Black
- Weight : 1.54kg
- Total lighting output : 2400
- Color temperature : 3000-6000K
- CRI : 80Ra
- Luminous efficacy (real value): 90lm/W
- Voltage : AC200-240V
- Life Time: 50.000hrs L80 B10 (Ta 40°C)
- PF : > 0.9
- Beam angle [°]: 20 / 40/ 60
- Base Type : 2 pin, 3 pin and 4 pin available

If you are interested in our products, pls feel free to contact us. We look forward to cooperating with you !



**< Alight Optoelectronic Industry Commerce Co.,LTD >**

TEL : +86 760 22107179

FAX : +86 760 22102131

Website: [www.alight.hk/www.alightinc.hk](http://www.alight.hk/www.alightinc.hk)

ADD : 2/F,110# XiaoLan Ave.Central,XiaoLan Town,ZhongShan City,GuangDong,  
China 528415



# Thank You

Take Alight,Take a Bright Life.